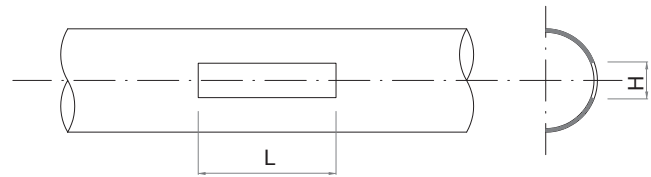




INSTALLATION

NK/DZ diffusers are designed for direct installation on the ventilation ducts. To install the diffuser, prepare an installation hole sized LxH for the chosen diffuser, slide the diffuser into the hole and fix it to the duct with steel bolts. Seal the connection between the duct and the diffuser.

Be careful when measuring the height of the diffuser in relation to the duct diameter. See the table with standard sizes.



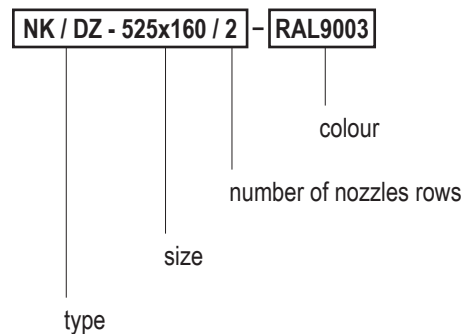
DESCRIPTION

NK/DZ are air duct diffusers with long-throw nozzles designed for low- and medium-pressure installations directly in round ventilation ducts. Nozzles position can be adjusted to any direction so that shape of the air stream can be regulated. They can be used with constant and variable airflow. The air can be supplied at the temperature lower or higher than the temperature in the ventilated room.

FEATURES

- standard make includes one, two or three rows of long-throw nozzles
- adjustable angle for the outgoing air from nozzles
- possible simultaneous vertical and horizontal ventilation
- highly inductive
- nozzles are made of high-quality material, and painted standard white
- can be installed directly on the round ventilation ducts
- available in standard RAL 9003 colour
- upon customer's request, can be made in any size and any colour from RAL palette

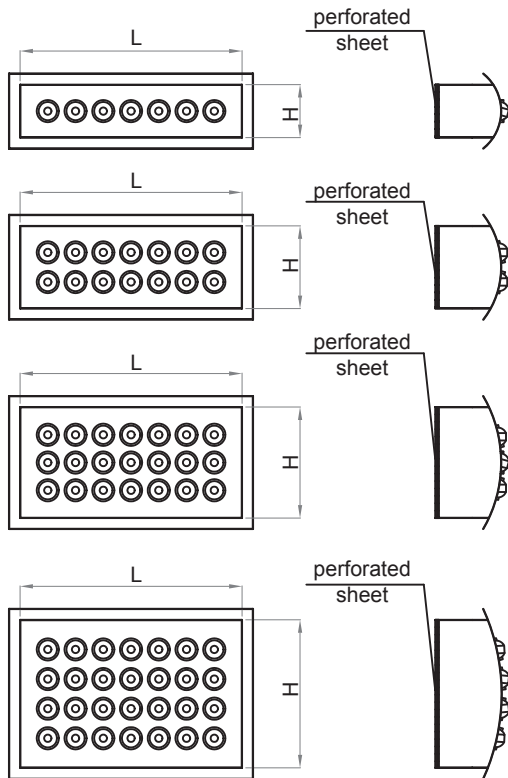
ORDER REFERENCE



5.1 NK/DZ

air duct diffusers with long-throw nozzles

DIFFUSERS NK/DZ



STANDARD SIZES

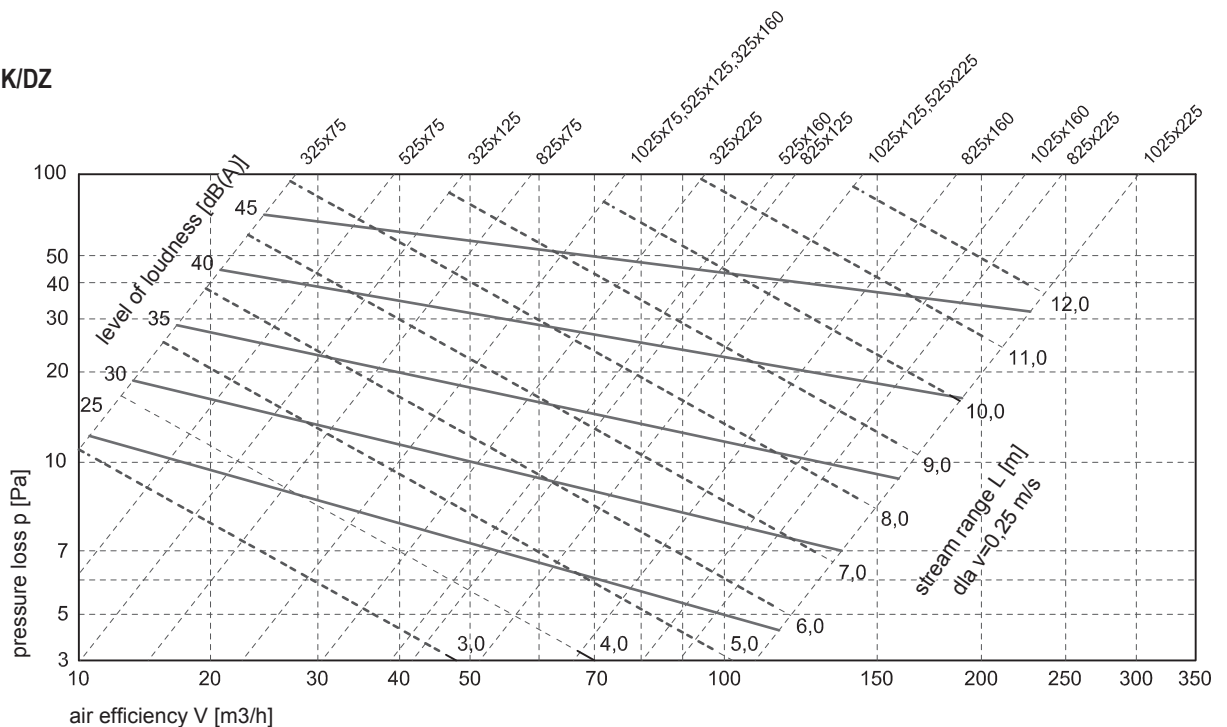
Size NK/DZ	Number of nozzles rows	Number of nozzles	L [mm]	H [mm]	Air duct diameter [mm]
325x75	1	7	325	75	160-200-250
525x75	1	11	525	75	160-200-250
825x75	1	18	825	75	160-200-250
1025x75	1	22	1025	75	160-200-250
325x125	2	14	325	125	250-315-400
525x125	2	22	525	125	250-315-400
825x125	2	36	825	125	250-315-400
1025x125	2	44	1025	125	250-315-400
325x160	3	21	325	160	400-500-630
525x160	3	33	525	160	400-500-630
825x160	3	54	825	160	400-500-630
1025x160	3	66	1025	160	400-500-630
325x225	4	28	325	225	630-800-1000
525x225	4	44	525	225	630-800-1000
825x225	4	72	825	225	630-800-1000
1025x225	4	88	1025	225	630-800-1000

L - installation hole length
H - installation hole height

FEATURES

The figure shows airflow capacity V (m^3/h), pressure loss p (Pa), airflow scope L (m) for end speed of 0.25 m/s, and volume level [db(A)]. The airflow scope L relates to isothermal air supply.

DIFFUSERS NK/DZ



5.1.2